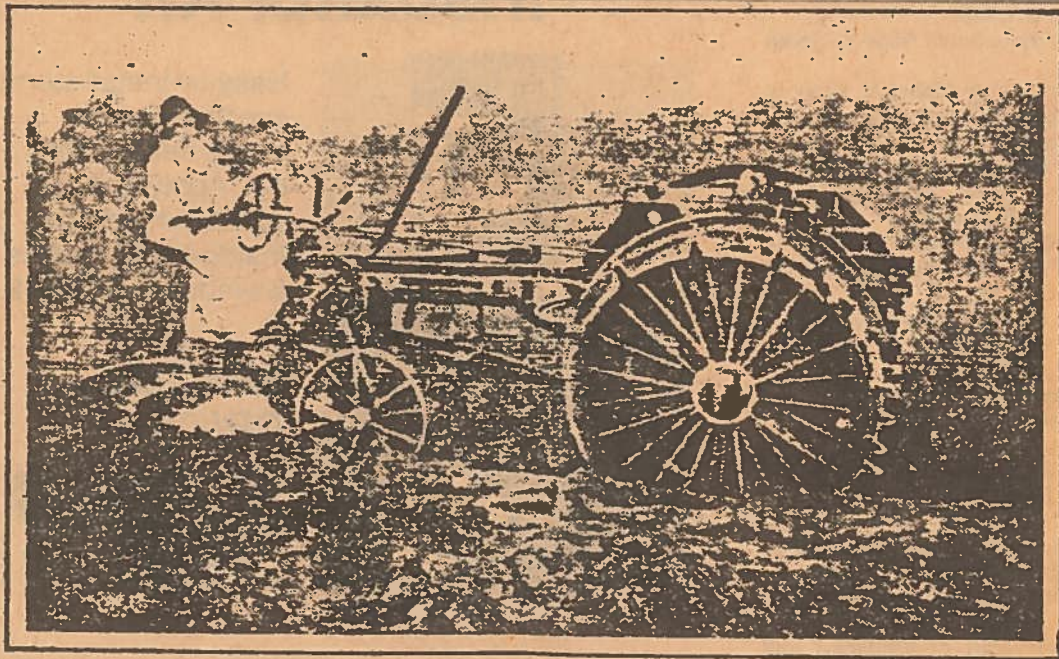


# Bethinking of Old Orleans

C.W.Lattin County Historian



Vol. IX

10-28-87

No. 43

## OLD EQUIPMENT

### The Farm Tractor and the Woman

This week we have two pictures compliments of George Callard from the Town of Carlton. The truck shown here was a piece of Carlton Town Highway equipment back when the photo was taken in 1919. Note the hard rubber tires, tool box on the running board, a pulley system for the dump box and kerosene head lamps. This old Brockway must have ridden just like a truck. It was no doubt, a big improvement over horse-drawn equipment. The two men in the cab at this writing are unidentified.

The other picture although poor in quality, is equally as interesting. Taken from an old scrap book, it is of the same vintage, dating back to 1918. Here is how the caption reads which accompanies it:

"Miss Ruth S. Harding of New York is the owner of this tractor. She says any woman who can run an auto can operate this tractor. Last year she fitted 30 acres of land in 40 hours and did not ask a man to help her in any way. She did the oiling and starting herself. The old order surely has changed. Hats off to woman!"

Miss Harding owned a farm located on Route 98 in the Town of Gaines at the time this picture and bit of information was published. What a strange looking tractor — the big wheels with lugs are up front. Note if you can, that the piece of equipment is pulling a two-bottom plow over which she sits. Indeed, Miss Harding was ahead of her time in more ways than one. "Hats off to woman!"