

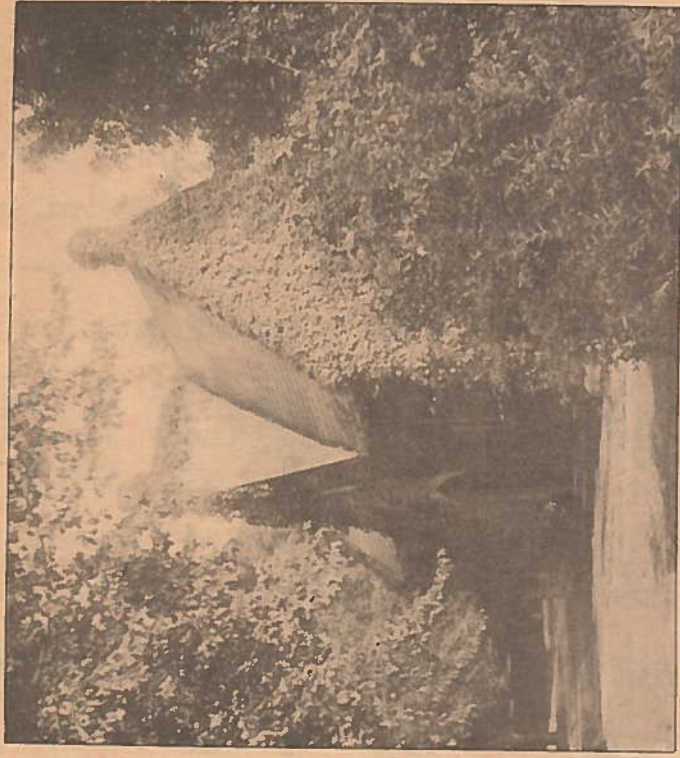
C.W.Lattin County Historian

Vol. VIII **Mt. Albion** No. 49
Chapel *12-18-86*

The photo shown here is the Mt. Albion Cemetery Chapel as it appeared in 1910 when covered with numerous vines. The chapel was erected in 1875 for a total cost of around \$3,000. The Orleans Republican at the time, reported that it was built in the mixed style of Norman and Gothic. The chapel measures approximately 20x20 feet inside with a vaulted ceiling. The entire building was constructed of rockdressed Medina Sandstone which was quarried at a local quarry. The contractors for the job were A. Harris and R. Romp.

It is interesting to note that the plan for this chapel was made by Charles Diem who with N.S. Field operated the Orleans County Marble Works in Albion. This business not only dealt in monuments and gravestones but also built mantels, grates and furniture. Along with this, Field and Diem were the manufacturers of terra cotta products including window caps, brackets and cornices.

Although this is the only building presently known to have been designed by Charles Diem, he was certainly in the right trade for having expertise of this nature. Indeed, the Mt. Albion Cemetery Chapel ranks as one of Orleans County's finest Gothic structures complete with Gothic buttresses, original windows with Gothic tracery and its original slate roof with



two-tone patterns. When the chapel was built in 1875 it was erected in front of a holding vault which had been completed the year before. Today, both the chapel and holding vault remain in excellent repair and form a center of interest as one enters Mt. Albion Cemetery.