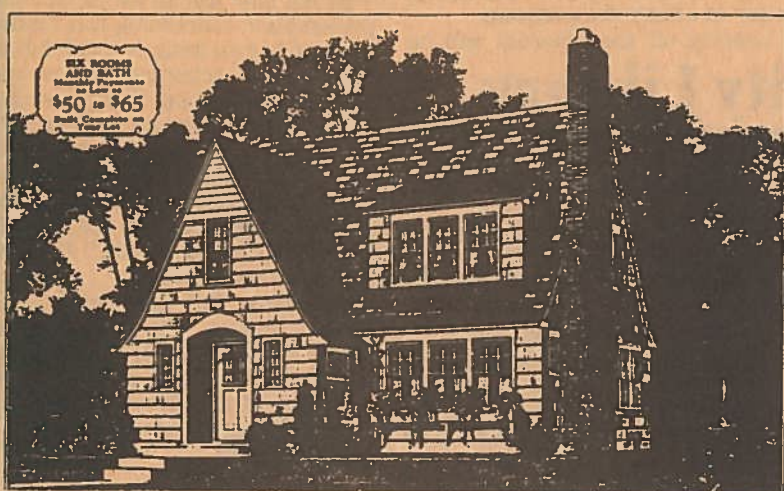


Bethinking of Old Orleans

C.W.Lattin County Historian

The Sears, Roebuck And Co. House



Vol. VIII

11-6-86

No. 44

Recently I was thumbing through a 1930 Sears, Roebuck and Co. catalogue of "Honor Built Homes." Much to my surprise I recognized in it a home located on Hazard Parkway in Albion. The illustration shown here is that house from the 1930 catalogue. It was built in the spring of 1931 for Elmer Wahl and when he and his bride Lorraine, were married in June 1931 they moved in. This particular home was called the Lynnhaven and here in part is what the 1930 catalogue had to say about it.

"In presenting the Lynnhaven, we feel that we are offering a home which will solve a problem for many home builders. The graceful way in which the front projection ties itself into the main building and the exceptionally attractive entrance, make this home one that will be admired by many. The exterior walls, covered with our Royal Red Cedar 24-inch shingles, when stained light gray, give a very pleasing effect."

The house now owned by Mr. and Mrs. Jerome Pawlak, looks as it did fifty-five years ago with the exception of new siding. Interestingly enough, right after I discovered the Lynnhaven in Albion, I also saw another Lynnhaven on a recent visit to Syracuse. I'm sure that because of its "picturesque possibilities" a number of people throughout the United States selected this home from the Sears, Roebuck & Co. catalogue from over 100 designs.

Particularly during the teens and twenties, modern homes were purchased through the Sears, Roebuck & Co. In fact, at that time they were the world's largest builders of fine homes. The 1930 catalogue states: "Building a home by our famous ready-cut method is the same as having it built by the best contractor in your community, only all the labor necessary in cutting the framing is taken care of in our factories by electrical machinery. You receive the material perfectly cut to length, properly marked so that it can easily be assembled according to blue prints and instructions furnished, and you save about 40 per cent of the carpenter labor. This method also assures you a much stronger building because of the accuracy of our cutting it by machinery." Homes of this nature were shipped on railway cars.

As for financing, here is what the catalogue has to say about one loan plan: "No monthly payments for first four months. We will make you a loan up to 75 per cent of the total value of the completed house and lot. Terms, \$8.56 per month on each \$1,000.00, which includes 6 per cent interest and pays out all principal in 15 years."

Let me close this article by noting that the Lynnhaven on Hazard Parkway in Albion is only one of several Sears, Roebuck & Co. homes of the different designs to be found in Orleans County. I'm also told that the 1930 catalogue of Sears Roebuck homes was the last year such a catalogue was issued by the company as the Great Depression seriously affected the building industry.