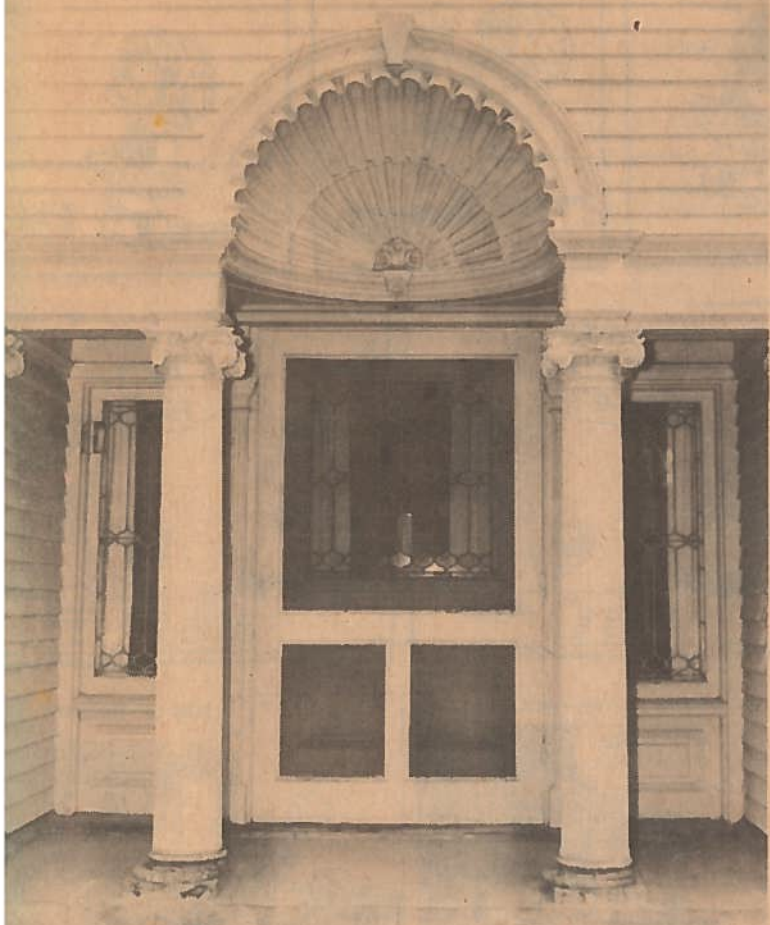


# Bethinking of Old Orleans

C.W.Lattin County Historian



## Exceptional Entrance

Vol. VIII

9-1-86

No. 35

The year 1986 has been designated by our State Legislature as Architectural Heritage Year. To help celebrate this the Orleans County Department of History will publish a black and white poster 17 x 22 inches which will depict eight exceptional entrances from Orleans County. These illustrations are all photographs by Bill Covell. The poster will be released for sale on Sunday, August 31 from 1-5 at the Cobblestone Museum Complex in Childs during the second annual Old Timers Fair. The Swan Library will also carry these posters for sale. A limited edition of 300 will be printed which will sell for \$1.00 each on light weight paper and \$2.00 each on a heavier weight stock.

The photo shown here is an example of one of the illustrations from the poster. It is one of the most exceptional entrances in Orleans County and can be seen on the front of the Houseman Funeral Home located on Park Avenue in Medina. It is unusual in that this is not the main entrance of the house but a second floor doorway to the roof of the front porch. Seldom seen up close by anyone it is a doorway of extraordinary detail and classical beauty. The Houseman Funeral Home was built in 1901-02 by Thomas B. Robbins in the Colonial Revival Style.

The other photos on the poster include entrances from the Romanesque Revival Style St. - St. Joseph's cemetery chapel in Albion, the Norman Revival - First Free Methodist Church in Albion, the "Old English Gothic" - Pullman Memorial Church in Albion, the Greek Revival - DAR House in Albion, the Greek Revival - Merrill-Grinnell Funeral Home in Albion, the Colonial Revival - Beach Mausoleum in Boxwood Cemetery in Medina and an interior Art Deco doorway from the Lyndonville Elementary School at Lyndonville.