

Bethinking of Old Orleans

C.W.Lattin

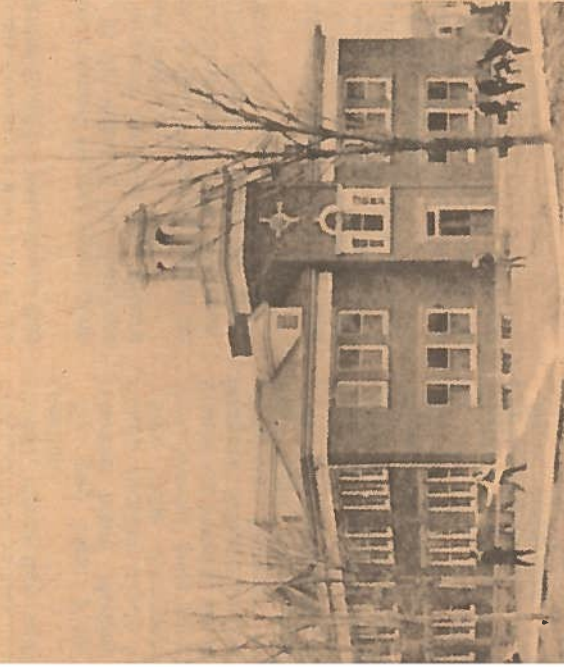
County Historian

sometimes referred to as Georgian. This particular style recaptured and reproduced features of the Federal and Greek Revival Styles of the early 19th Century. Colonial Revival was also in part, a reaction to previous over decorated styles of the Victorian age. Buildings of this style were built with some integrity and authentic detailing through the 1930's. However it is interesting to note that the Colonial Revival Style is still being used today.

Characteristics of this style include an overall symmetrical theme. Gable or hip roofs are used with dormer windows forming decorative features. Frequently palladian windows are used as focal points. The overall arrangement of masses is simplistic. Architectural details are usually very refined and of course, reminiscent of classical design.

The Holley High School 1896-1930 was one of the early and outstanding examples of this style in our county. You will note here in the photo, all the characteristics afore mentioned. I think it is interesting that the architect who designed the school used for his model, Independence Hall in Philadelphia. Indeed, there are many similarities with the center tower, lowly placed front entrance with palladian window above and a round window above that. The belfry is also reminiscent of the cupola and balastrade on Independence Hall. All these similarities of design in fact, surely indicate the great interest which must have been aroused 110 years ago in our heritage from Colonial times.

By 1930 the old Holley High School had become outmoded, was razed and ironically replaced with another Colonial Revival School building which now serves Liftec



Architecture Destroyed

Holley High School 1896-1930

Vol. VIII 4-3-86 No. 14

owing our country's Centennial in 1876 there became interest in our colonial heritage. Consequently, by the 80's, this interest began to be expressed in architectural forms. Many architectural firms began making