

Bethinking of Old Orleans

11-1-85

C.W.Lattin
County
Historian

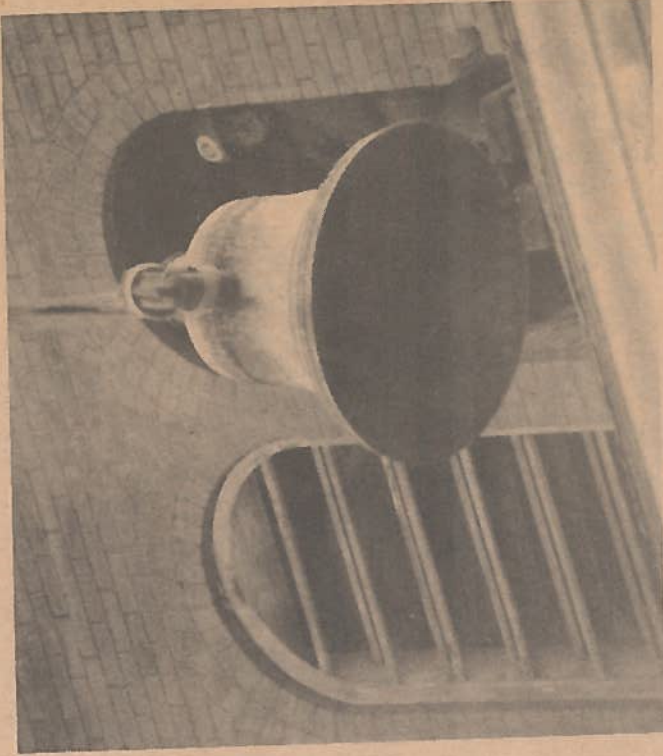
Holley's Halloween Bell

VOL. VII No. 44

This week I'd like to share with you some information prepared by Ronald W. Herlan an Associate Professor of History at the State University College in Brockport and Deputy Historian for Disciples United Methodist Church. Mr. Herlan's article is as follows:

Holley's "Halloween Bell" will celebrate its 91st birthday in a new location this year. Cast on October 31, 1894 by the Henry McShane Manufacturing Company of Baltimore, Maryland, the 36-inch base diameter, 1,014-pound brass bell spent its previous ninety birthdays in the upper tier of the former Holley Methodist Church tower at the north end of village Public Square. It was donated to Disciples United Methodist Church by Mr. and Mrs. Charles Johnson and on Friday, October 4th (as the photograph shows), was removed there under the supervision of Disciples Historical Preservation Task Force. Earlier this year this column noted that the Thomas clock, and reassembled it for display at the church site in Clarendon. Restoration of the clock and bell to good working order has already begun. Future plans call for their installation (together with the 1893 former Clarendon Methodist Church bell) in a new Disciples Church tower.

Although the Holley "Halloween Bell" was originally acquired at a cost of \$180.32 in the autumn of 1894, local women raised \$71.86 towards its purchase as early as October 1892. Bell fund-raising efforts culminated in the fall of 1894



with a special church dinner. It produced \$38.29 from a menu which included raw or stewed oysters, biscuits and butter, cold meats, cake, tea, and coffee. By December of 1894 the bell and clock were operating in the tower which had been patiently awaiting their arrival for a quarter of a century since its construction in 1869. "Now," reported The Holley Standard on December 20, 1894, "the deep-toned musical notes of the bell ... regularly ring out the passage of each hour..."