

Bethinking of Olde Orleans: The B L & R Railroad

BY C. W. LATTIN
Orleans County historian

8-9-12

The following article was published in a September 1908 issue of the Holley Standard.

"The Buffalo, Lockport and Rochester railway was formally opened on Thursday, September 3 from Rochester to Albion by a trip over the road by officials, directors and builders. Thursday and Friday, cars were sent over the road on the regular hourly schedule, but no tickets were sold until Saturday when the road was officially opened to the public.

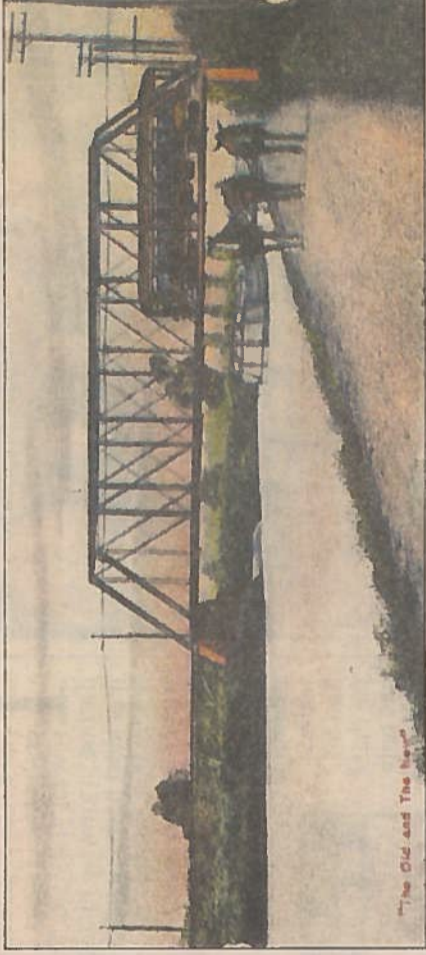
"The first day's

patronage was large, people being attracted by the novelty, cleanliness and convenience. There was not, however, any material saving in fare as compared to the steam road. The fare from Holley to the Rochester city line where transfer was made to street cars, was 40 cents; Albion 17 cents, and to Brockport nine cents.

"Employees at the Holley station were E.

Bethinking of Olde Orleans

Vol. XXXIV, No. 32



The Old and The New

Finley, agent; T. Kirby and Thomas Ennis, operators; A. B. Chappel and Michael Ennis, bridge tenders, and baggage & express men.

"The cars ran every hour, westbound at nine minutes past the hour, and

eastbound at 31 minutes past the hour. The cars were large, with the outside painted Pullman green, and the inside woodwork natural mahogany. Each car was divided into a first class section uphol-

stered in green plush, a smoking compartment upholstered in leather, and a baggage compartment." The electric railway ran through Orleans County connecting into the urban systems in Rochester on the Eastern Rapid Railway. Tracks cross the Erie Canal. The Erie Canal when first built and for some time after, was the only means of transportation aside from the highways across New York State."

east and North Tonawanda on the west. There were depots in Holley, Albion and Medina and small waiting stations at many of the cross roads. With more people getting automobiles coupled with the depression, the B L and R ceased operations in April 1931.

Our picture is from a post card entitled "The Old and the New". Information on the card states:

"Where the Rochester and Eastern Rapid Railway Tracks cross the Erie Canal. The Erie Canal when first built and for some time after, was the only means of transportation aside from the highways across New York State."