

Historical Post Card Views of Albion

6-7-12

BY C.W. LATTIN
Orleans County Historian

A new book entitled "Historical Post Card Views of Albion, NY," by the writer of this column will be released beginning this Friday and Saturday.

This comes during the Albion Strawberry Festival with the books being available at the Pullman Memorial Universalist Church, corner of Main and East Park Street.

The book consists of 108 pages and contains 200 full color post cards dating from the 1890s to the early 1970s.

The author will give a brief talk at 6 p.m. Friday in the Pullman Church and likewise be available both days for book signings.

The book has been published on behalf of the Pullman Church which will use proceeds for restoration of its landmark edifice. The post cards are in

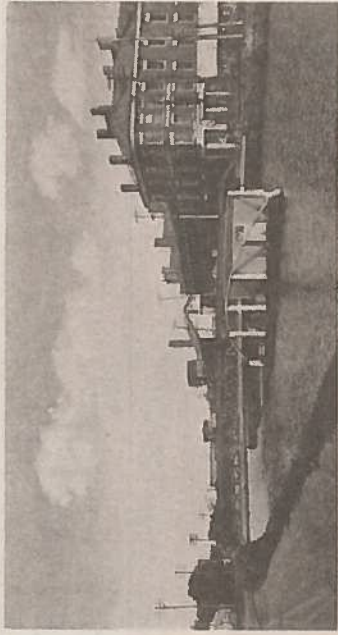


essence a pictorial history of the village. A number of buildings represented in this volume no longer exist.

Recently in telling a friend about this she asked, "what are some of the outstanding post cards represented in the book?"

Several came to mind including a wonderful view of the Charles Hart mansion circa 1910 on South Main Street which was torn down in the mid 1940s. This is now the site of the new Hoag Library.

There is a bird's eye view of the NY Central railway yard off South Clinton Street showing a coal car



and box cars being unloaded around 1910. The railroad depot, now destroyed, and the freight house are shown in the background.

One unusual card shows the Albion High School (circa 1908) looking from the stage into the auditorium seating. A table and chair appear on the stage for the principal to take attendance. It seems roll call was taken by students

counting off by their seat numbers. Studentas who were absent naturally were not present to recite their number and therefore were considered absent.

The post card represented with this article shows the old swing bridge on Main Street over the Erie Canal prior to 1911 when the present lift bridge was installed. The bridge tenders house was located

in the middle of the canal so boats could pass on either side. Curved rails are seen over this shanty so the tow ropes being pulled by mules or horses could easily pass over. The Burrows Block to the right had at the time a long east wing with shops facing the canal. This building, now houses Krantz Furniture.

The post cards used in this publication are from the extensive collection of the late William Nestle. These have been shared with the author and Pullman Church by Rene' Schasel who inherited the collection. The 200 cards used in the book were selected from over 600 Albion cards. Inspiration for the book came from a recent publication put out by the Medina Sandstone Society with a superb intro-

duction by Robert E. Waters and other text by Craig Lacy and Ron Stork whose collection of post cards was used. The Albion Post Card

book has a variety of categories including: Street Scenes and Houses, Business District, Churches, County Buildings, Fire Department, Erie Canal, Schools, Agriculture, Western

House of Refuge (prison), Mount Albion and ends with three pages of old time souvenirs using the same pictures that were often used on post cards.

Books may be purchased beginning Friday at The Little Book Shoppe in Medina, Bindings Book Shoppe and Family Hardware stores in Albion and after July 8 at the new Hoag Library in Albion.