

# EASTMAN CONCERTS CONTINUE

BY C. W. LATTIN *5-10-17*  
Orleans County historian

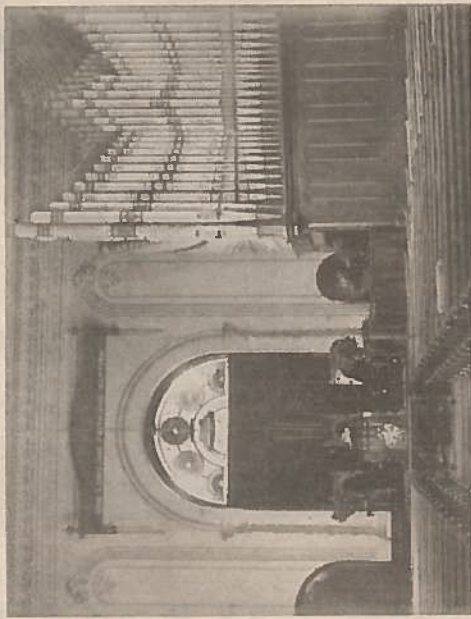
been in partnership with the Eastman Community School of Music. Proceeds will benefit the Albion Alumni Foundation Scholarship.

However, this is the first concert to utilize the Albion First Baptist Church.

One mission of the concert series is to showcase the wonderful church architecture that Albion's village has to offer. The Albion Baptist Church is surely one of the outstanding architectural gems of our county. Its magnificent hexagonal tower an spire extending heavenward 165 feet is a recognizable landmark for miles around.

The church edifice was dedicated in 1860 at West Park and Liberty Streets. The original Baptist meeting house built in 1832 was located just north of the Swan Library on Main Street.

Our photo which accompanies this article was taken around 1890. In it we see a huge pipe organ



which had been installed in 1883. Prior to that time a melodeon had been used for hymn accompaniment. Note the highly decorated organ pipes. In 1923 this instrument was replaced with the present Mollar pipe organ with two banks of pipes in separate chambers.

The stained glass transom over the draped baptistery was added between 1883 and 1887. A cornice

above it states: "Our Lord, One Faith, One Baptism". Very decorative boards of stenciled designs and faux panels give otherwise plain walls depth and character. It is interesting to point out that while the organist was up front in a relatively small space the choir remained in the balcony behind the congregation at the time of this picture.

Sunday's concert is

Vol. XXXIV, No. 19

**Bethinking  
of Olde  
Orleans**

being billed as "Broadway Comes to Town" with Matthew Grills (tenor), Kayleen Sanchez (soprano), who incidentally was born in Waterport, and Paul Sanchez (pianist). Students from Albion High School will also be performing.

This is the third year of the Eastman Series where the Albion community has