

Medina canal basin focus of photo, tour

BY C. W. LATTIN
Orleans County historian

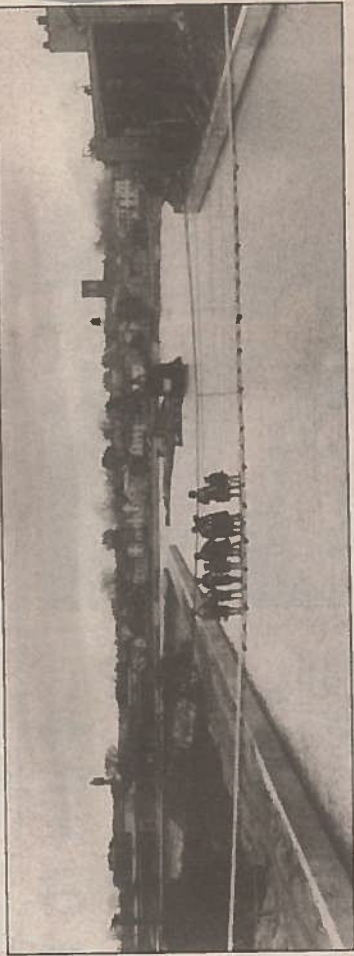
8-4-11

Our photo shown here was taken Nov. 6, 1914 looking in a southern direction toward the Medina canal basin. The picture was shot from the bridge which crosses the Erie Canal over to Glenwood Avenue.

In the foreground is a temporary pedestrian bridge suspended on cables. Here we see school children crossing the canal en-route to school.

Behind this appears to be an island in the middle of the canal basin. This was the old north wall of the canal upon which the original towpath was located. At the time our photo was taken, this had not been removed yet, the canal had been made navigable.

To the left we see the amazing concrete retaining wall which was one of the engineering feats of construction on the canal when widened here 100 years ago. This wall goes



canal at the eastern end of the basin.

In the distance to the right we can see the tower of St. John's Episcopal Church. On Aug. 13, the Medina Sandstone Society will sponsor a guided

walking tour of this area at 1 p.m., during the annual Canal Days festival. The tour will be by local histo-



over the Medina aqueduct above Oak Orchard Creek, which flows under the

rians and depart from the gazebo in the heart of the canal basin.

C. W. Lattin is the Orleans county historian. His column appears every Thursday in The Journal-Register and The Albion-Advertiser.