

The Road That Leads to The Country Mill

7-31-11

BY C. W. LATTIN
Orleans County historian

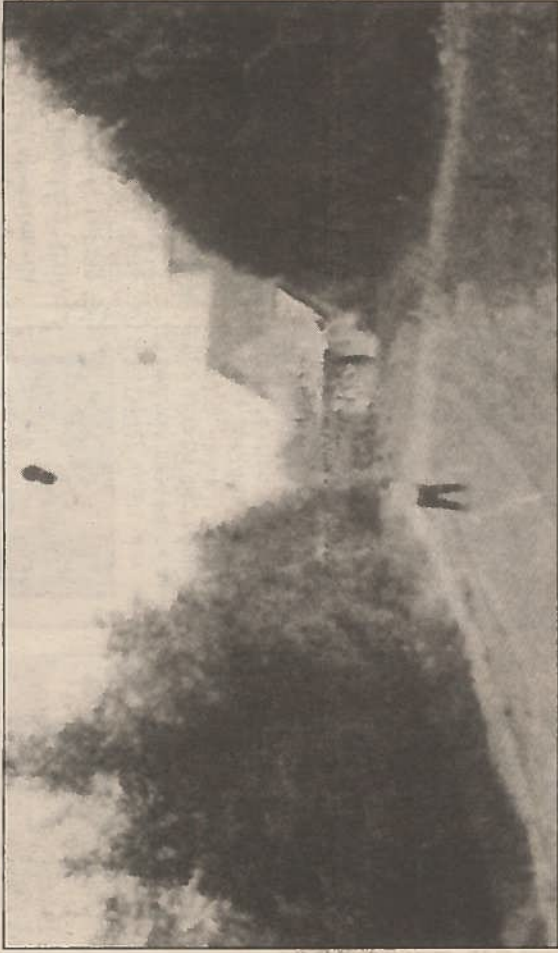
This picture taken from an old newspaper clipping is titled, "The Road that Leads to the Country Mill." Likewise, the article indicates this is the mill at North Ridgeway, Town of Ridgeway. It is fair to assume this is Mill Road as it appeared circa 1900.

A poem with the old clipping is as follows:
"A wild, uncultured
appian way,
Bordered by blossoms of
every hue;

The fairest roses
perfume the air,
And the gentian opens
her cup of blue.

The spring unfolds its
earliest green;
And lark and robin their
fairest songs trill;
And none forget it who
pass that way.

The road that leads to
the country mill."



The news article also indicates that the mill shown here was built in the late 19th century. To quote: "It has rolls, moreover, for wheat and buck wheat besides a run of burrs for corn."

North Ridgeway, a tiny hamlet in the northwest corner of the Town of

Ridgeway, grew up around the junction of Johnson's Creek and Jeddo Creek. The 1860 Orleans County map shows a mill pond on Jeddo Creek just south of Mill Road with a saw mill located nearby. At that time there was also a blacksmith shop and a

wagon shop at North Ridgeway. The flour mill in our photo, however, was a latter addition to this once hub of activity.

C. W. Lattin is the Orleans county historian. His column appears every Thursday in The Journal-Register and The Albion-Advertiser.