

Eastman music comes to Albion

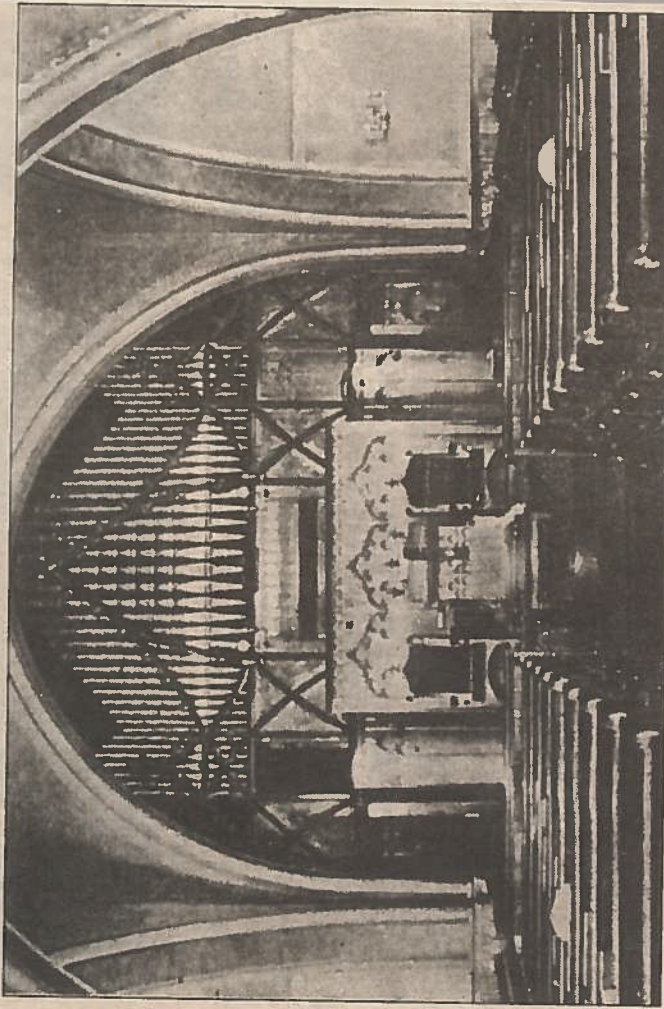


C.W. LATTIN 4-29-10
County Historian

The second in a series of three concerts by Eastman Community School of Music faculty is set to take place May 9 in Albion. The mission is to "promote the performing arts in our community by offering a series of professional concerts. We hope to educate and inspire through exposure to musical excellence. In using our historic churches as musical venues, we will more greatly appreciate the cultural heritage of our community," said coordinators.

At 3 p.m. on Mother's Day, May 9, "Serenade with Six Strings" will be performed by Peter Kodzas, guitar and Pamela Kurau, soprano, in the Pullman Memorial Universalist Church, 10 E. Park St., in the Historic Courthouse Square District.

This extraordinary landmark was designed by Solon S. Beriman for George M. Pullman, who gave it to the local Universalist congregation in 1895. Built of pink Medina sandstone, it



CONTRIBUTED PHOTO

was described as "Old English Gothic" in style.

Pullman (1831-97), the noted manufacturer of railroad sleeping cars, grew up in Albion before leaving for Chicago, where he made his fortune.

The church sanctuary is cruciform in plan with 41 Tiffany stained-glass windows. The largest, titled "Christ the Consoler," is signed by Tiffany and reportedly cost \$5,000 when installed in 1895.

All the woodwork is quarter-sawn golden oak with gothic revival detailing.

The pipe organ was built by the Johnson Company of Westfield, Mass. It contains 1,248 pipes in 22 ranks with facial pipes having been decorated in gold leaf at Tiffany Studios.

In 2005, the sanctuary was redecorated in a restoration color scheme, thus the dark, late Victorian colors. The ceiling in the crossing, however, is original. There also is the original electric light fixture with 43 branches.

The current congregation recognizes the importance of this unique edifice and had made every effort to

maintain its integrity. Indeed, it looks the same today as it did in 1895.

The accompanying photo taken in the late 1890s shows the interior with center pulpit, organ loft and pipe organ.

NOTE: At 7 p.m. tonight I will conduct a guided tour of Albion's three Medina Sandstone churches. This is in connection with Genesee

Community College and an Art History class to which the public is also invited. The tours will begin at the Pullman Memorial Church.