

5-29-08

Kuckville bridge was abandoned in the early 1930s

BY C. W. LATTIN
Orleans County historian

Our photo from a postcard dating to 1913 shows the Suspension Bridge at Kuckville. More correctly, it was a steel arch bridge that crossed over Johnson's Creek.

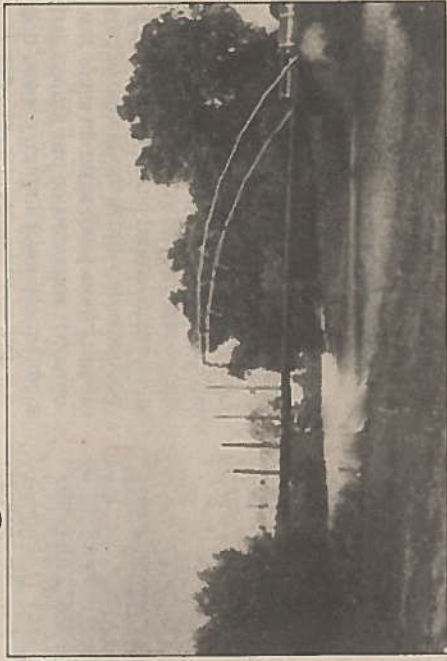
This view is looking north downstream.

It is believed this bridge was built in the 1890s, making the route to Lakeside more accessible when that community was first becoming a summer resort.

In the early 1930s, when the current Route 18 or the Roosevelt Highway was put

through, this old steel arch bridge was abandoned. Great amounts of backfill were brought in to straighten out

that the old steel arch bridge with its plank flooring was removed for junk. However, the beautiful cut stone piers this bridge rested on remain somewhat in place. A couple of smaller versions of this vintage style bridge still cross over Johnson's Creek farther upstream.



CONTRIBUTED PHOTO

the road for a new concrete bridge. This was replaced about 12 years ago.

It wasn't until around 1950