

Kendall Mills thrived in 1890s

BY C.W. LATTIN

From this photo taken in the 1890s we see a saw mill which was once located at Kendall Mills on the Monroe-Orleans County line. A stone grist mill can be partly seen to the left in back of the saw mill building which was simply an open air structure.

The first miller and builder of a grist mill and saw mill at this location was Ose Webster. He settled here in 1819 noting that local farmers had to take

their grain all the way to Rochester or Farwell's Mills in Clarendon. The road to Rochester was long and the one to Clarendon at times almost impassible.

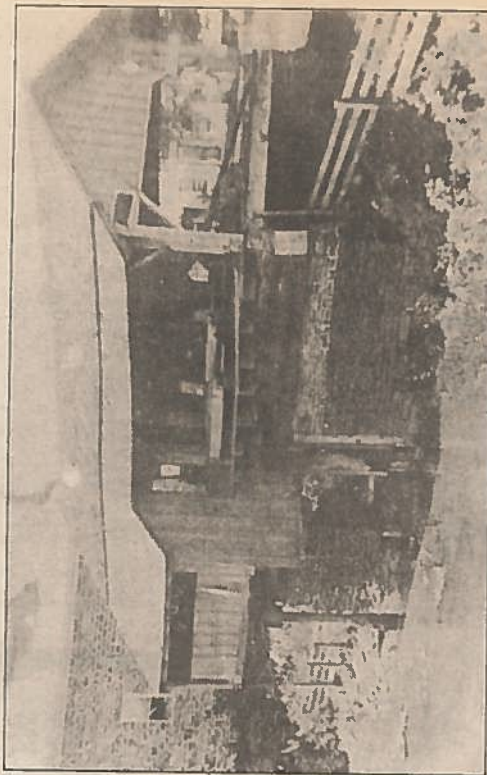
As a millwright, Mr. Webster erected two mills to fill the needs of the day on the banks of Sandy Creek. Like so many of our little hamlets Kendall Mills came into being because of water power for milling purposes.

Thus, Ose Webster provided two basic necessities for pioneers: Food for animals and lumber for shelter. Conse-

quently this little settlement, first known as Webster Mills, developed into a once thriving community.

In 1890, the place had, along with these two mills, two churches, a store, a hotel, a cooperage including a stove and heading mills, two blacksmith shops, a school, a physician and a post office plus 150 people.

Times change and ultimately the mills shown here have long been gone with Kendall Mills mostly only a memory today.



CONTRIBUTED PHOTO

5-10-07