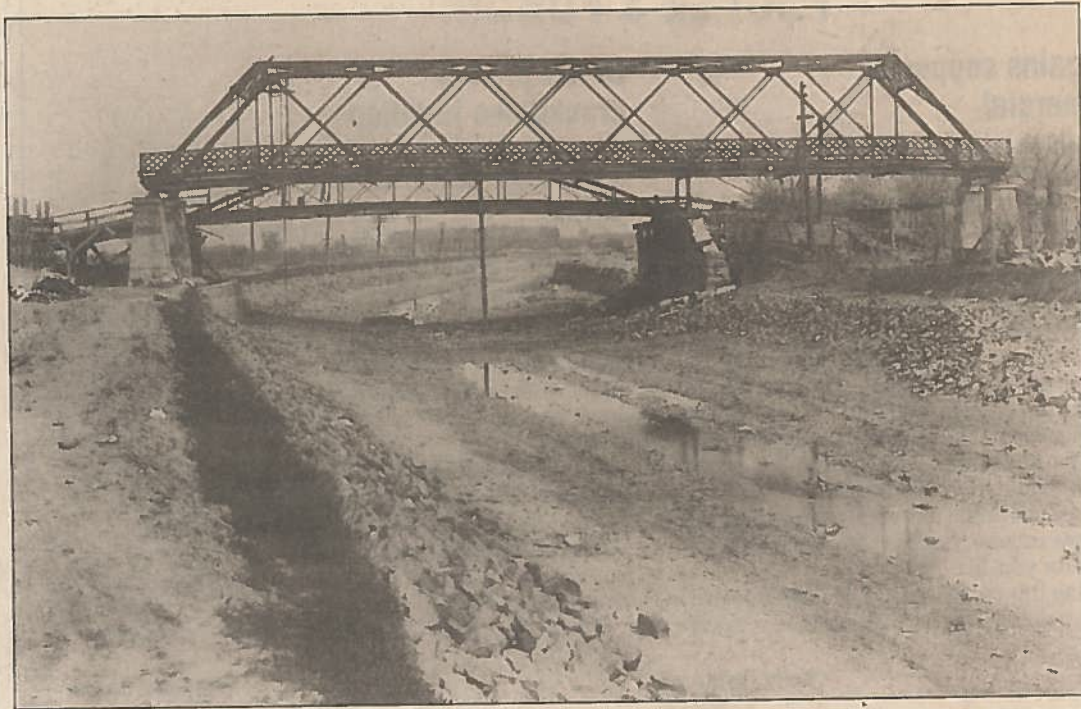


BETHINKING OF OLDE ORLEANS

Vol. XXVIII, No. 36

9-7-06

BROWN STREET BRIDGES



CONTRIBUTED PHOTO

BY C.W. LATTIN

This picture was taken May 7, 1912, looking east from the towpath on the canal. Here we see the new Brown Street bridge in Albion that has been placed on its piers recently. Right next to it is the old steel arch bridge that had served for vehicular and pedestrian traffic.

Notice the approaches or earth ramps for the new bridge are not yet in place. Notice also how much longer and higher the new bridge is compared to the older one.

When the canal was last improved it was made 12 feet deep and 90 feet wide at minimum. Prior to that, the canal was 8 feet deep and 70 feet wide. To gain depth the canal banks were made higher as well as digging deep. Because

of this general lay of the land around here, the north bank (towpath) is quite high in some places.

The Brown Street bridge has a pedestrian walkway. Most of these high bridges were located on country roads where that was not necessary. However, Bates Road bridge has one and Hindsburg Road bridge has one. This is, of course, understandable at Hindsburg because of the size of that community at the time these bridges were erected. Although crossing the Hindsburg bridge today, you would have no idea that a canal hamlet ever existed there.

What the photo of the Brown Street bridge tells us is that slight variations were made in the placement of bridges, so the old one could be used until the newer one was ready.