

Bethinking of Old Orleans

Vol. XXV

By C.W. Lattin, Orleans County Historian

No. 28

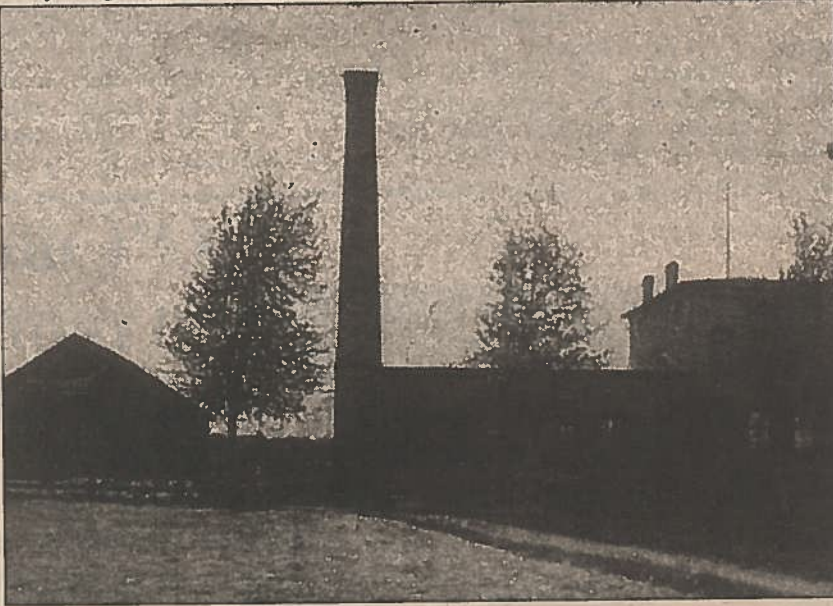
The Albion water works

7/11/03

There's an old brick building west of Albion, north of the canal, that frequently draws questions from younger people.

tower, 75 feet in height, having the capacity of 250,000 gallons was built near the south bounds of the corporation and a few rods

Since the early 1960s, the Village of Albion has taken its water supply from Lake Ontario via the Albion Water Treatment Plant on Wilson Road in Carlton. Prior to



west of Main Street. The top of this tower is 160 feet above the level of Bank St., giving a pressure of 65 pounds to the square inch.

"Ten miles of

this, wells, reservoirs and the canal were relied upon for the village water supply.

Let us now look back to earlier days when the first municipal water system was established. We find in Landmarks of Orleans County (1984) this rather descriptive account"

"The Albion Water Works Co. was organized in 1887. A contract was made with the corporation for a supply of water, fire protection and street and sewer flushing, and the company bound itself to supply pure water for domestic and sanitary purposes. These works were completed in the autumn of 1888.

"The supply of water is obtained from a gang of 12 wells north of the canal, and a mile west of the village. Here is a pumping station with two engines, each having a daily capacity of 1 million gallons. A street water

cast iron water mains have been laid, leading from this tower, to all parts of the village, and 101 hydrants have been set, each with two outlets capable of throwing inch streams to a height of 100 feet. There are now 540 private consumers. The stock of the company is \$100,000 and the value of the plant is \$105,000. It was placed in operation by Messers, Bassett Bros. of Buffalo. The treasurer is George B. Bassett of Buffalo, and the local superintendent is Oscar D. Eddy."

The photo shown here depicts the Albion Water Works Pumping Station back in 1905. It was located on the north side of the canal, west of Albion, off Albion-Eagle Harbor Road, which made it accessible by crossing Lattin's Bridge by the Guard Gates. This structure, which included pumping facilities and a residence for the station attendant, is still standing.