

4-18-02

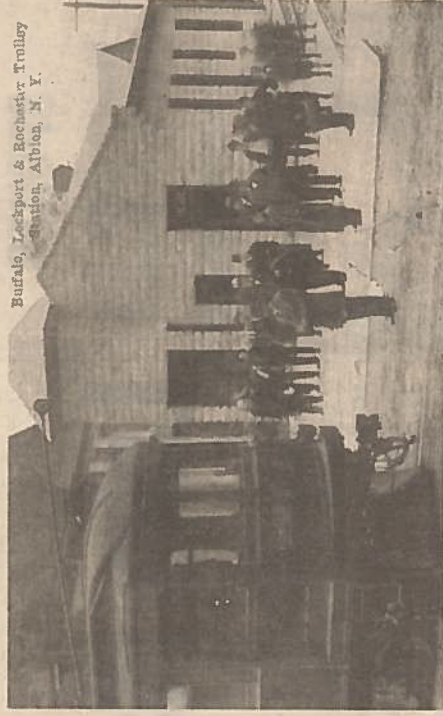
C.W. Lattin, County Historian

Trolley Station, Albion



With the extensive excavation work now under way on West State Street in Albion, lets look back to when the trolley passed through. In Albion the B.L. & R. trolley tracks followed the center of both East and West State streets. Although the trolley ceased to operate after April 30, 1931, the tracks have remained in place covered over with asphalt on West State until now.

The Buffalo, Lockport and Rochester 1 R. R. opened to traffic on Sept. 3, 1908. Both of our old post card views show the trolley line in its



Buffalo, Lockport & Rochester Trolley Station, Albion, N. Y.

early years. The group of men standing together form a contingent of members of the Elks Lodge about to embark on a trip to a convention.

The trolley station built of grey Medina Sandstone in 1908 forms a background while the trolley car looms in the foreground. A siding was located on the east side of the station so freight cars or other baggage could be unloaded at the higher door towards the rear of the station. This is the last opening in the building to the far right.

Our other post card view was taken around 1915 looking east. Here we see the trolley tracks in the street. A car is heading west with the motor man visible in the right hand front window. The trolley station is to the left and the Swan Library shows in the center middle ground with the Presbyterian Church

in the distance.

Since the trolley went out of business the station has served as a private residence. Unlike the N. Y. Central Railroad, the B.L. & R did not have a conformity of architectural design for its stations. In fact, no two looked alike. The one built in Holley was a shingled building with a wide overhang typical of railroad depots. The one built in Medina was a stucco station with decorative brackets supporting a wide overhang. The Albion Station, by contrast, had no overhang but sported a small tower tucked into one corner. The F.I.R. people prided themselves on the individual character of each station. In fact, the Brockport station was a renovated Greek Revival residence.