

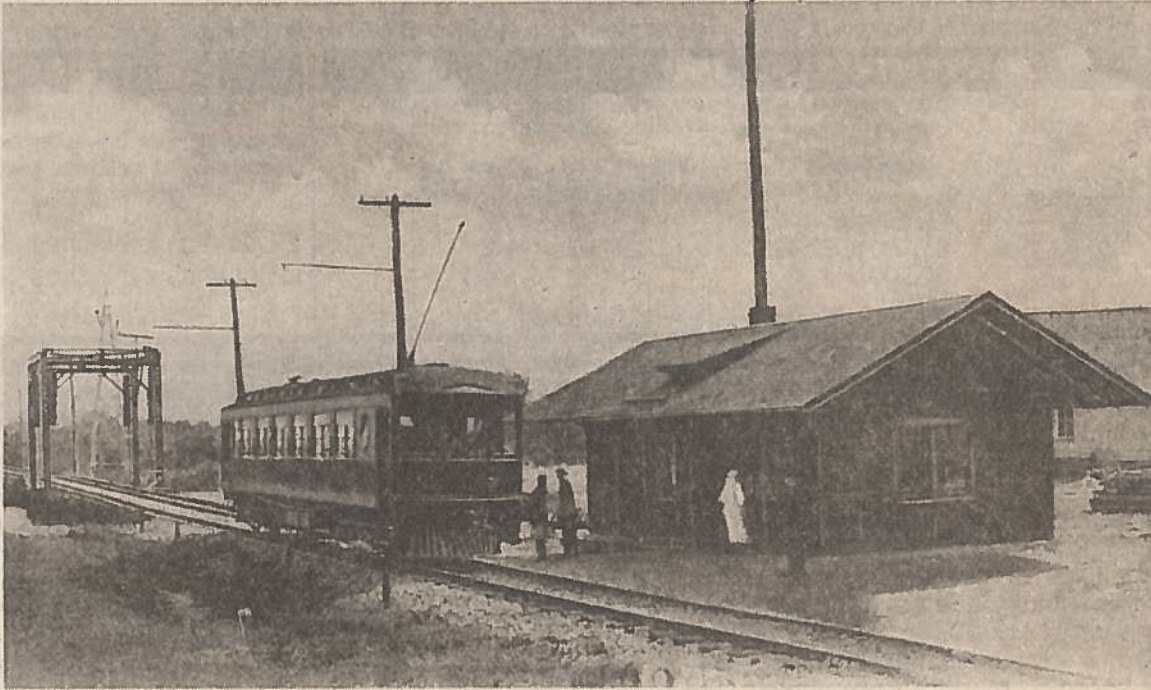
Bethinking of Old Orleans

Vol XX

C.W. Lattin County Historian

No. 48

THE B L & R TROLLEY, HOLLEY



This view of the BL&R Trolley at Holley is taken from a 90-year-old post card. The photographer stood on the west approach to the Holley lift bridge and took this picture facing south. Here we see the Holley Depot, Car No. 213 and a bridge which crosses the abandoned loop of the old Erie Canal. Several people are seen disembarking or boarding the car.

The Buffalo, Lockport and Rochester Trolley System was in existence from 1908 to 1931. It connected these three major cities plus many canal towns and other hamlets in between.

From the Holley Standard, dated Sept. 3, 1908, we glean this information about its beginning: "The Buffalo, Lockport and Rochester Railway was formally opened on Thursday, Sept. 3, from Rochester to Albion by a trip over the road by officials, directors, and builders. Thursday and Friday cars were sent over the road on the regular hourly schedule, but no tickets were sold until Saturday,

when the road was officially opened to the public. The first day's patronage was large, people being attracted by the novelty, cleanliness, and convenience. There is not, however, any material saving in fare as compared to the steam road. The fare from Holley to the Rochester city line, where transfer is made to street cars, is 40 cents; to Albion 17 cents, and to Bridgeport nine cents. Employees at the Holley station are E. Finley, agent; T. Kirby and Thomas Ennis, operators; A. B. Chappel and Michael Ennis, bridge tenders and baggage and express men. The cars run every hour, westbound at nine minutes past the hour, and eastbound at 31 minutes past the hour. The cars are large, with the outside painted Pullman green, and the inside woodwork, natural mahogany. Each car is divided into a first class section upholstered in green plush, a smoking compartment upholstered in leather and a baggage compartment."