

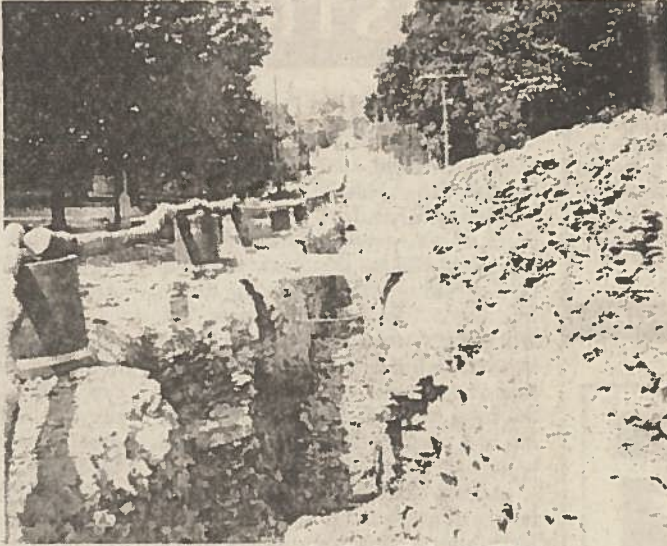
Bethinking of Old Orleans

C. W. Lattin County Historian

Vol. XX

No. 44

MEDINA SEWER 1908



The photo submitted for your viewing this week is a rare scene on East Center Street in Medina. The picture, believed to have been taken in 1908, shows the installation of huge terra-cotta tiles for the sanitary drainage system in Medina. Note here, the tiles standing on end along a deep trench which has been dug right down the middle of the street. It appears that the digging conditions must have been difficult for all the shale rocks heaped up on the north side of the trench. It appears to be from six to eight feet deep. The barricades are simply rustic poles laid on top of the tiles to keep people, horses and carriages from falling into the trench. In the distance we can just make out the tower of St. Johns Episcopal Church. Our photo therefore, was taken looking west near the intersection of State Street where East Center goes down an incline to cross over

Oak Orchard River.

From a special edition of the Medina Daily Journal published in 1922, we find the following information under Sanitary System:

"In 1889 a Sewer Commission was appointed and the task of supplying Medina with an efficient sanitary drainage system began. Sewers were added from time to time until all parts of the village were connected in the sanitary system which led into Oak Orchard Creek."

Ed Grinnell, in his history Medina Here's To Our Heritage, indicates: "The system was completed, as far as is known, with additions as the village grew. The open discharge into the creek continued until 1965."

The original sanitary drainage system was designed by O. C. Gillette a civil engineer who was given credit for his careful supervision of a very satisfactory system once completed.