

# Bethinking of Old Orleans

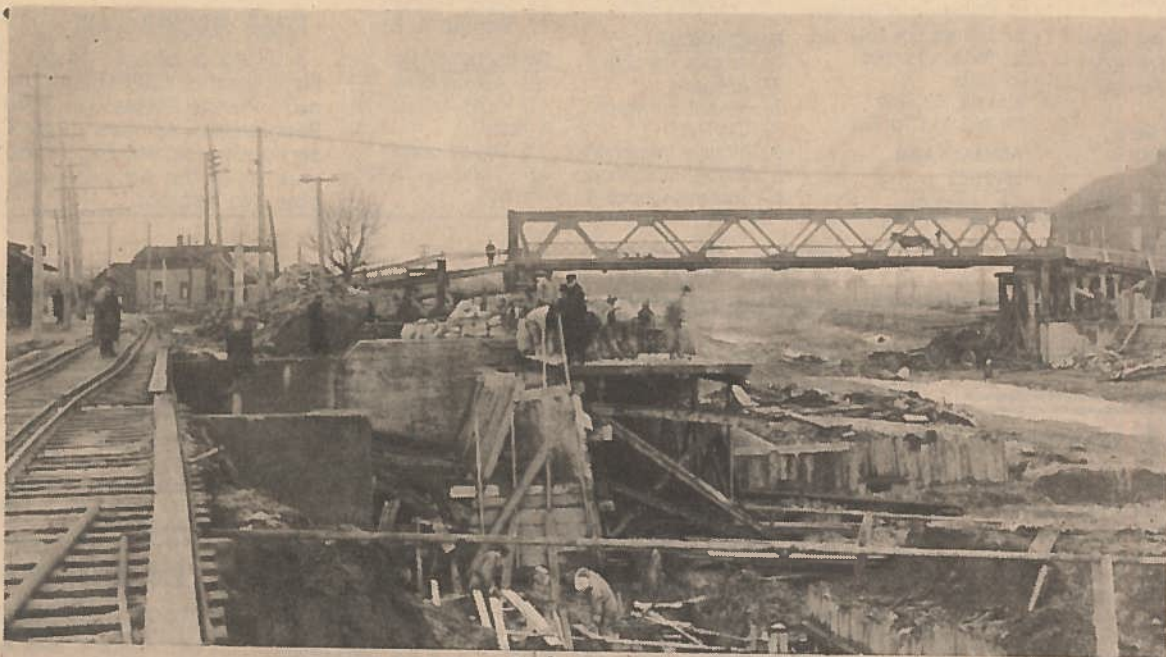
C.W.Lattin County Historian

Vol. XVII

12-27-95

No. 49

## CANAL CONSTRUCTION HOLLEY



Both of these documentary photos were taken in Holley back when the Erie/Barge Canal was last widened and deepened with other related improvements. The upper photo shows the lift bridge on East Avenue under construction at the time when the picture was taken on Jan. 20, 1913. The photographer pointed his camera in a northerly direction showing both the west and east approaches to the new bridge. Note the pilings supporting each end of the lift bridge as well as the ramps. It is interesting that a horse and driver are crossing it at the time. Most of the lower part of the picture shows the canal bottom and spillway under construction with manual labor dominating the scene. To the far left we see ties and rails which were temporarily placed in this position for the BL & R trolley system. The man standing on the track may well be the "boss" or foreman of the works. Back of him we just barely notice the BL & R station.

Our lower photo was taken on Feb. 6, 1913 in the same area of construction. But this time the photographer pointed his camera in a northwesterly direction. By so doing, we now see an entire view of the BL & R Station which is the dark-

colored small building about in the center. Below, we see the more completed spillway, above which are the BL & R rails and ties. To the right we see a steam engine (tractor) used in the construction work. In this view behind the station, Perry Street and East Avenue join at the approach to the lift bridge which the photographer cut out at far right.

Across the tracks we also notice a large square house which was the Santoro Hotel. Its proprietors were Lorenzo and Josephine Santoro at the time. A Coke-Cola sign appears over the steps to the front porch, although stronger beverages were also served. They also ran a little store right on the corner of Perry and East Avenue directly behind the station in the photo. In fact, East Avenue was once known as Canal Street back when these pictures were taken. After the BL & R trolley system went defunct, the station was purchased by private interests and moved up Perry Street for a garage where it still exists.

Note many of the electric poles with hanging arms to hold the power source cable to transmit electricity to the trolley cars. High voltage electric towers also appear in the distance.