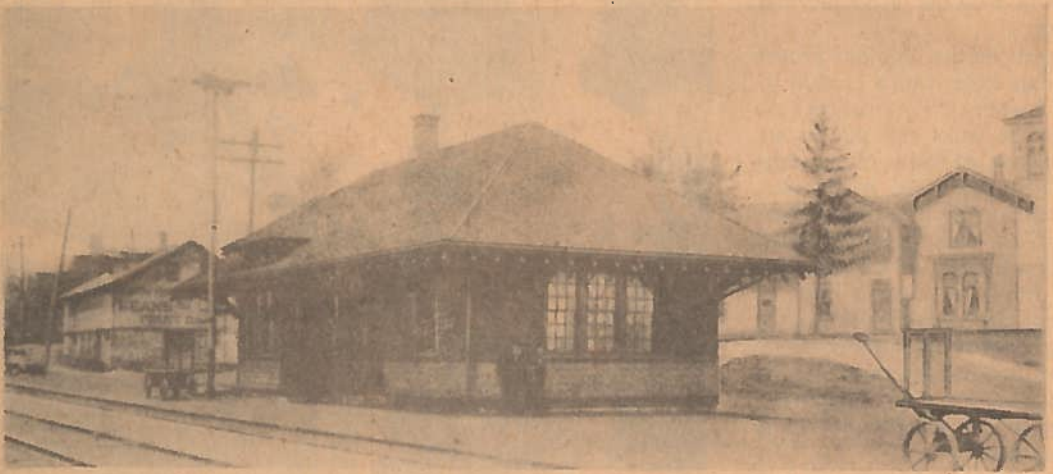


Bethinking of Old Orleans

C.W.Lattin County Historian



Vol. X 5-11-88 No. 18 SAVING THE HOLLEY DEPOT

In the fall of 1985 a group of twelve people interested in preserving the past formed the Murray-Holley Historical Society. The group received the encouragement of both the town and village boards and also the donation of the old New York Central Railway Depot from Diaz Chemical Co. The depot however, was given under the condition that it be moved from its original site. The building itself had also been neglected and suffered at one time a flash fire in one area. The Murray-Holley Historical Society had from the outset, the major task of raising funds to accomplish its goals. The Village of Holley fortunately owned the land upon which the old depot could be moved. This parcel is located in back of some business blocks on an abandoned loop of the old Erie Canal which is adjacent to the Holley Super Duper store. Grants have been received for this project from the Gannett Foundation, the Curtis Foundation, the National Heritage Trust and the New York State Council on the Arts.

Restoration architects from Syracuse were contacted and consulted on making plans for the new grounds, basement, development and restoration of interior spaces and exterior surfaces.

On March 3, 1988 the depot was moved by Roy Kenyon and Sons Excavating of Holley. The build-

ing was estimated to weight 50-60 tons and was cut in two for moving purposes. The two parts were lifted by a crane on to the new basement walls the following day.

When sufficient funds are raised, the process of restoration will continue. The interior with fourteen foot high ceilings is finished in wainscote paneling which needs rejuvenating. The former station contains a ticket office, freight office, waiting room and baggage room. The ticket office was designed so as to project three feet from the main structure in order to give a clear view of the railroad tracks. The office, when restored, will serve as office space and research room for historic archival materials. The baggage room will be an exhibit center and the waiting room will appear much the way it used to when operational as a depot.

Currently the Murray-Holley Historical Society is using space provided by the American Legion Jewell Buckman Post in Holley. There, they have a small museum containing artifacts from the Murray-Holley area. These will be moved when the time comes, to the depot museum. The basement of the depot, which it never had prior to moving, will contain restrooms and a large meeting-audience-exhibit room, i.e. a multi-purpose space. It will serve for years to come as a community center and the home of the Murray-Holley Historical Society.