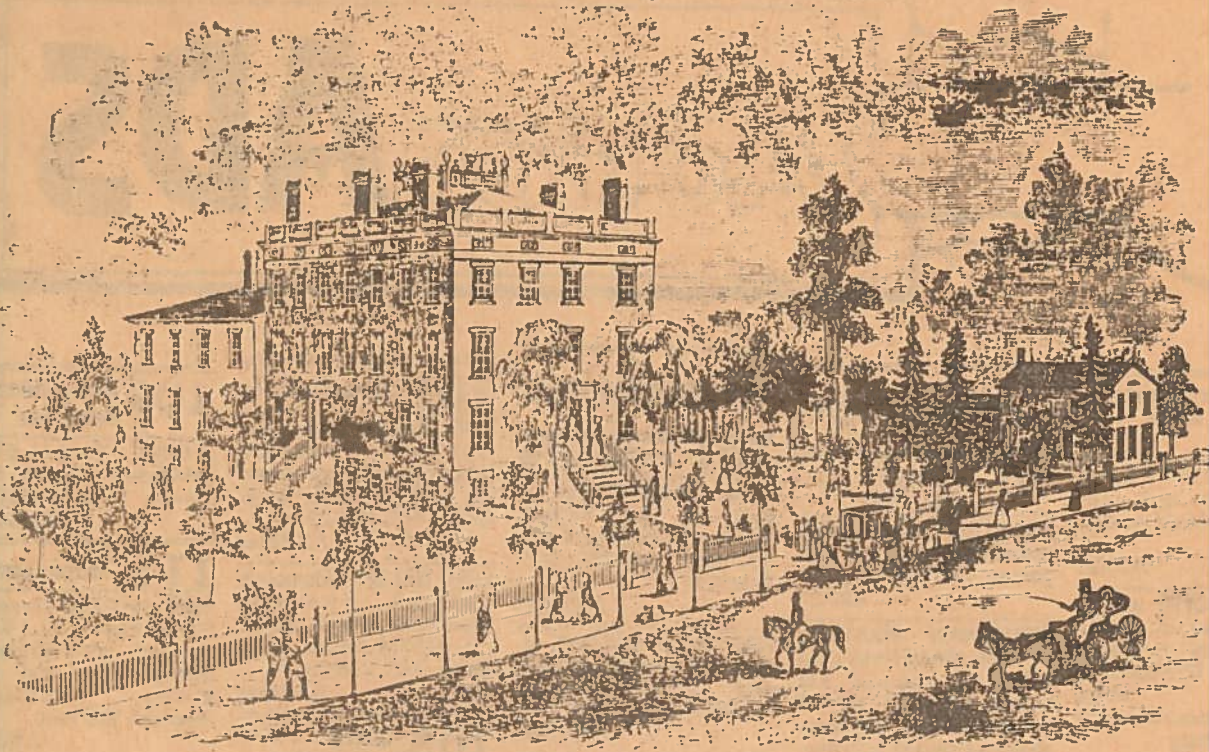


# Bethinking of Old Orleans

C.W.Lattin County Historian



PHIPPS UNION FEMALE SEMINARY—ALBION, ORLEANS CO., N. Y.

Vol. X 4-22-88 No.16

## THE PHIPPS SEMINARY

The above picture is that of the Phipps Union Seminary which once stood on the site now occupied by the County Clerk's Office and Legislature. It was founded in 1833 by Caroline Phipps, afterwards the wife of Col. H.L. Achilles. Her first select school for girls was conducted in the Eagle Tavern which was also located on the County Square. In 1836 the citizens of Albion raised and loaned to Miss Phipps the sum of \$5,000 which she subsequently repaid. She erected a brick building 40 x 60 feet in size having three stories. The site, building and equipment cost at the time, about \$27,000. The school opened in January 1837 and was received so favorably that it soon enrolled 100 boarding students. In 1857 the main building was enlarged and ten teachers were employed. By 1870 enrollment began to wane and the building was eventually damaged by fire in 1874 and again in 1875. At that time the old seminary closed its doors.

In 1882 the county, after purchasing the property, razed the remains of the old school and erected on the lot, the present County Clerk's Office which opened in December 1883. In 1913 the Phipps Union Seminary Alumni Association erected a memorial tablet on the front of the County Clerk's Office which states:

To Mark the Site of  
Phipps Union Female Seminary  
Founded in 1833  
And in Memory of the Founder  
Caroline Phipps Achilles  
This Tablet is Placed  
By the  
Seminary Association  
1913

The following ad for Miss Phipps' Seminary appeared in the Orleans American of October 1, 1834:

Albion Female Seminary

Miss C. Phipps, principal; Miss S. Phipps, vice principal.

Academic year divided into Two Sessions of 2 weeks each First commencing on the 1st day of October, and ending on the 19th day of March. Pupils can have board in good families or at the Seminary for from \$1.25 to \$1.75 per week. It is desirable that no pupil be withdrawn previous to the Examination at the end of the Term, No deduction for absence except occasioned by illness. During the ensuing Term there will be an extra charge of 12 1/2 cents per quarter for Fuel.

Term of Tuition, per quarter

Reading, Writing, Orthography, Geography and the first rudiments of English Grammar and Arithmetic

\$2.00

The same with the higher, Arithmetic and Grammar, Ancient, Modern and American History Practical Bookkeeping, Universal and Ancient Geography

\$3.00

The same with Natural and Moral Philosophy, Composition, Retic, Botany, Chemistry, Astronomy, Geography of the Heavens, with use of Globes

\$4.00

The same with Logic, Enfields Institutes and Intellectual Philosophy, Algebra, Geometry, Botany and Chemical Apparatus

\$7.00

Drawing and Painting, \$5.00; Music (Piano)

\$10.00.

French, Latin and Italian languages each

\$5.00