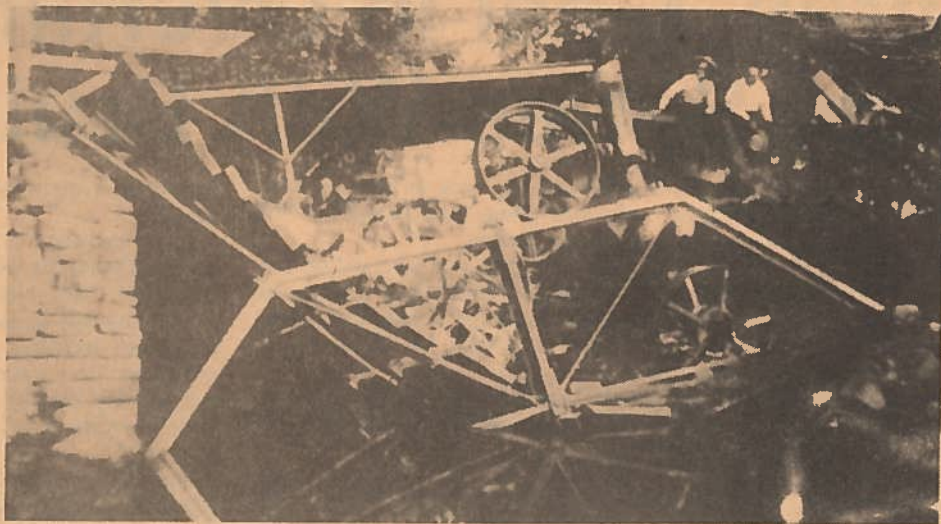


Bethinking of Old Orleans

C.W.Lattin County Historian



Vol. X 4-11-88 No. 13 USE OF HIGHWAYS

In doing some research recently, Lysbeth Hoffman, Historian for the Town of Carlton, ran across the following items of interest. These various laws were to be found in the "Highway Manual of the State of New York" published in Pursuance of Chapter 655 of the Laws of 1893. James B. Lyon, Printer, Albany, 1893.

Chapter IV, Use of the Highways, Part II: By the Public Generally for Travel and Transportation. Section 21. (page 227).

"Intemperate drivers. - A person owning a carriage for the conveyance of passengers upon a highway who employs or continues in his employment a driver addicted to drunkenness or to the excessive use of spirituous liquors is liable to a penalty of five dollars a day during the time he keeps such a driver in his employment. The penalty may be recovered by the highway commissioners, in the name of the town, to be applied to the improvement of highways.

"Any person owning such a carriage on whom a sworn notice of a passenger, stating that the driver while actually driving such carriage has been guilty of intoxication to such a degree as to endanger the safety of the passengers, has been served, must immediately discharge such driver; and if he retains him or has him in his service within six months after the receipt of such notice, he is liable to a penalty of five dollars a day for every day during which he keeps such driver in his employment

after receiving such notice, recoverable in the same manner and for the same purpose.

The term carriage includes every sort of carriage or vehicle used for the transportation of passengers."

Section 17:

"Steam traction engines and dangerous animals. A person who drives or causes to pass along a public highway a dangerous animal, or a vehicle or engine propelled by steam, unless a person over twenty-one years of age precedes such animal, vehicle or engine by at least one-eighth of a mile, carrying a red light if in the night-time, and giving warning to all persons he meets of the approach of such animal, vehicle or engine, is punishable by imprisonment not exceeding six months, or by a fine not exceeding two hundred and fifty dollars, or by both."

Section 18: "Liability for Breaking Bridge. (page 226) Liability for breaking bridge - A person who drives over a bridge a vehicle and load together weighing four tons or over is liable for all damages resulting to person or property by reason of the breaking of such bridge."

The photo shown here, which is compliments of George Callard, was taken in the early part of this century. It depicts a steam traction engine which caused the Bill's Road Bridge over Marsh Creek in the Town of Carlton, to collapse. Further information such as people, dates and circumstances are unknown concerning this accident. One is given to wonder if Section 18 of the Highway Manual was applied in this case.