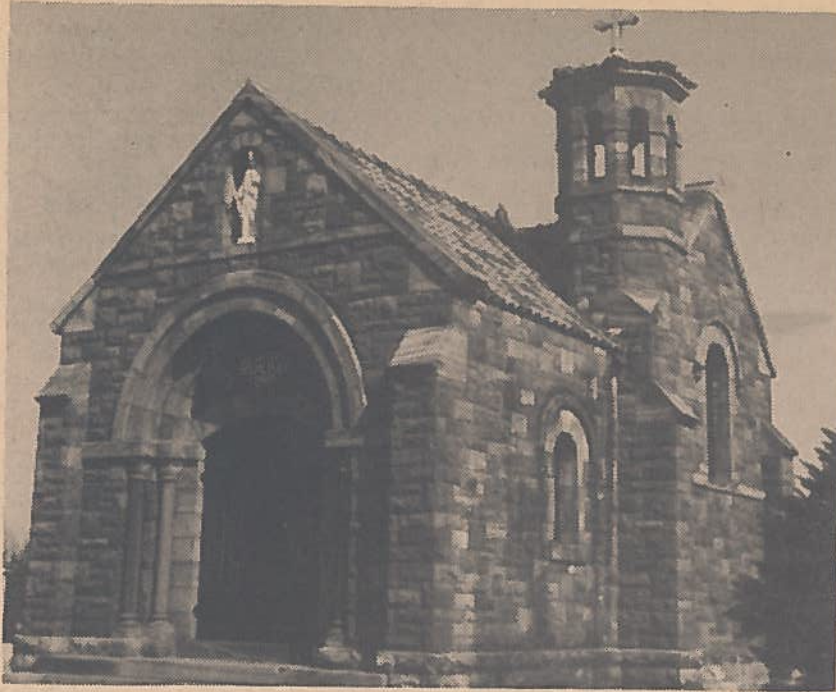


# Bethinking of Old Orleans

C.W.Lattin • County Historian



VOL. 1

Memorial Day

No. 20

This Romanesque Chapel built of Medina Sandstone with a red and green Spanish Tile roof is the center of interest at St. Joseph's Cemetery east of Albion. Designed and built in 1920 under the avid direction of the late Pasquale DiLaura, it cost \$10,000 and contains a vault for fifteen bodies.

Bodies - Mortals - Death - Immortality? Ingersoll wrote "Life is a narrow vale between the cold and barren peaks of two eternities." The time for making our own trifle bit of history does have to be squeezed into an average life span of around three score plus twelve --- not very long indeed, when compared to eternity. Mt. Albion Cemetery alone has over 25,000 interments since 1843 with an annual average of 125 being added to that eternal city. Right now the population of Orleans County is 37,000 living mortals. You can easily see that over all there are many more deceased people in our county than living ones. And that's what Memorial Day is all about --- a time of remembering.

Stop! Meditate for a minute. If you have lived for just a quarter of a century in the same neighborhood, think how many people you have known in your own environment who are no longer living. If you have reached the half century mark, the figure of neighbors, friends and acquaintances becomes almost staggering. We are a living history so therefore let us reflect our thoughts on Memorial Day to those we can no longer touch in body but in spirit.

Recall the sound of a long silenced voice or laugh or an impish grin or a characteristic posture long laid to rest. Let us now remember those people who have so touched our lives as to make everlasting impressions. And let us be thankful that we knew them.